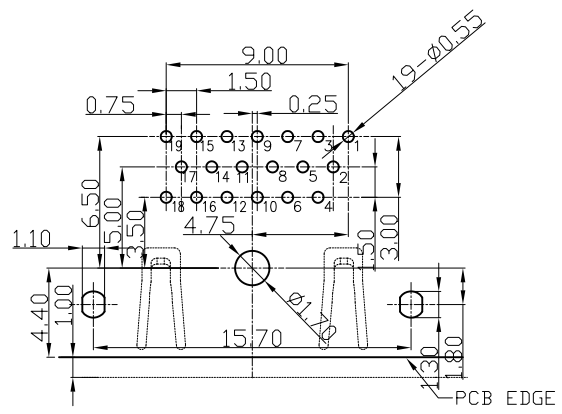


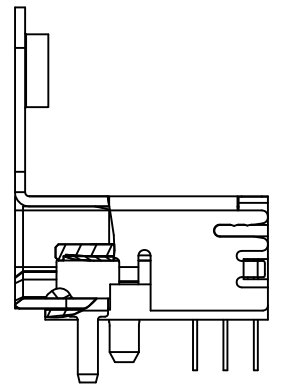
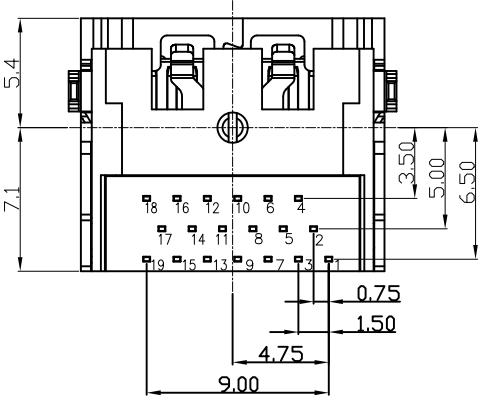
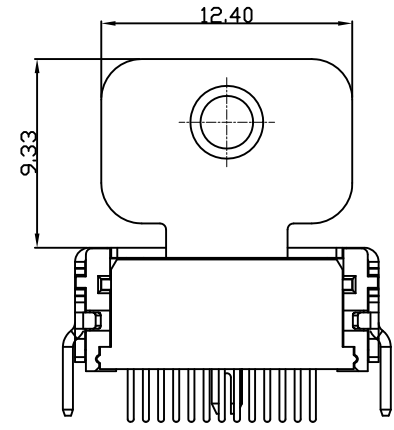
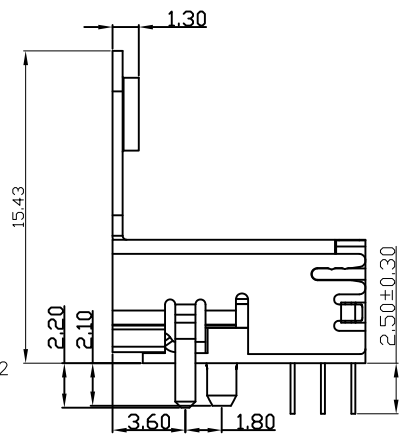
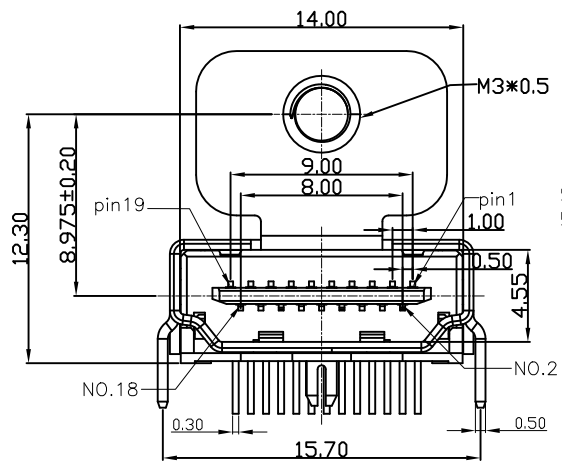
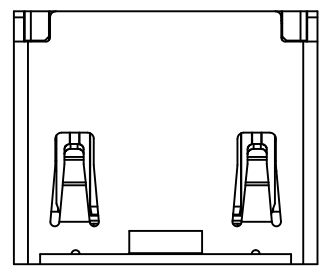
REV.	ECN.NO.	APPD.
A	/	pcy

NOTES:

- MATERIAL:
  - Housing: thermoplastic plastics
  - terminals: Copper Alloy  
Gold plated in contact area:  
Tin plated in termination  
Nickel Plated overall
  - Shell: Steel&Copper Alloy  
Nickel/Au Plated overall
- ELECTRICAL CHARACTERISTICS:
  - Rating Current :0.5 Ampere
  - Rating Voltage :40 V Max
  - Contact Resistance:30 Milli ohms
  - Insulation Resistance:100 Mega ohms Min.
- MECHANICAL CHARACTERISTICS:
  - Connector Mating force: 4.5kg MAX
  - Connector Unmating force:1.0Kg min
  - Durability:10000Cycles.
- ENVIRONMENT CHARACTERISTICS:
  - Operating temperature:-20°C to +85°C
  - Storage temperature:-20°C to +65°C



RECOMMENDED PCB LAYOUT (TOP VIEW)  
TOLERANCE FOR PCB LAYOUT IS ±0.05



HD23-041X-XXX0X1

- 1:Iron alloy Ni plating
  - 5:Copper alloy Ni plating
  - 4:Iron alloy Au plating
  - 8:Copper alloy Au plating
  - 1:tray
  - 2:Tube
  - 8:Tape&Reel
  - 9:Tape&Reel+Mylar
  - 1:Black
  - 5:PA9T
  - 2:PBT
  - 6:LCP
- 1:Au 1u", 3:Au 3u"  
5:Au 5u", 7:Au 10u"  
8:Au 15u", A:Au 30u"

TOLERANCE UNLESS OTHERWISE SPECIFIED		<b>FLW</b> 深圳市华联威电子科技有限公司				
.XXX ±0.10 .XX ±0.20 .X ±0.30		HUA LIAN WEI TECHNOLOGY ELECTRONICS CO.;LTD.				
.X' ±3' .XX' ±2'		APPROVED		PART NAME:		
				HDMI 19P/F 三排90度单耳(孔距8.975)		
		CHECKED		PART No:		
				HD23-041X-XXX0X1		
		DRAWN		PROJECTION:		
		pengchaoyong		UNIT: SCALE SHEET REV.		
		DATE		mm 1:1 1 OF 1 A		
		2014.12.3		A		