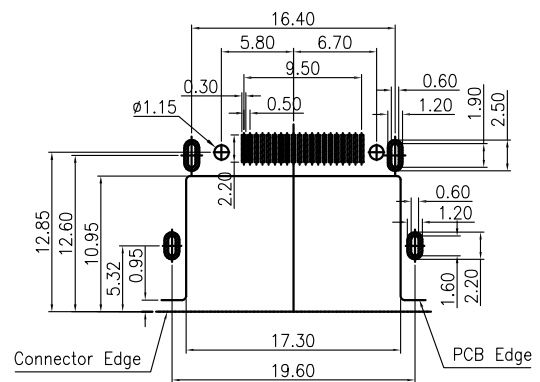
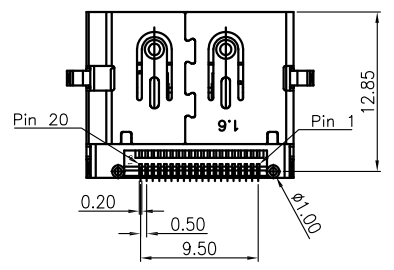
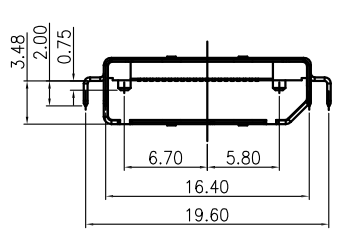
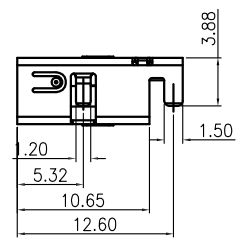
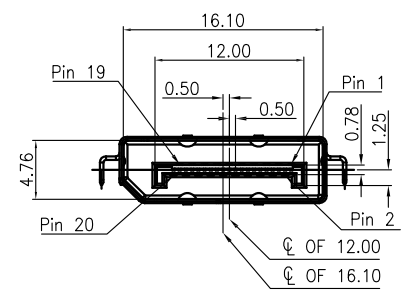
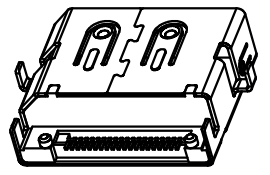
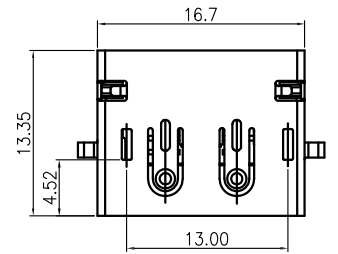


REV.	ECN.NO.	APPD.
A	/	/



RECOMMENDED PCB LAYOUT  
(THICKNESS=1.60±0.05mm)

NOTES:

- 1.MATERIAL:
  - 1.1 Housing:thermoplastic plastics
  - 1.2 terminals:Copper Alloy  
Gold plated in contact area:  
Tin plated in termination  
Nickel Plated overall
  - 1.3 Shell:Steel&Copper Alloy  
Nickel/Au Plated overall
- 2.ELECTRICAL CHARACTERISTICS:
  - 2.1 Rating Current :0.5 Ampere
  - 2.2 Rating Voltage :40 V Max
  - 2.3 Contact Resistance:30 Milli ohms
  - 2.4 Insulation Resistance:100 Mega ohms Min.
- 3.MECHANICAL CHARACTERISTICS:
  - 3.1 Connector Mating force: 4.5kg MAX
  - 3.2 Connector Unmating force:1.0Kg min
  - 3.3 Durability:10000Cycles.
- 4.ENVIRONMENT CHARACTERISTICS:
  - 4.1 Operating temperature:-20°C to +85°C
  - 4.2 Storage temperature:-20°C to +65°C

DP13-0415-G61038  
 5: 铜壳镀镍  
 3: 载带  
 1: 黑色  
 G: 半金G/Fu  
 6: LCP

TOLERANCE UNLESS OTHERWISE SPECIFIED		<b>FLW 深圳市华联威电子科技有限公司</b>				
.XXX ±0.10		HUA LIAN WEI TECHNOLOGY ELECTRONICS CO;LTD.				
.XX ±0.20		.X' ±3'				
.X ±0.30		.XX' ±2'				
APPROVED		PART NAME:	DP 20P 沉板3.48			
CHECKED		PART No:	DP13-0415-G61038	C		
DRAWN	chenyiting	PROJECTION:	UNIT:	SCALE	SHEET	
DATE	2023.06.20		mm	1:1	10F1	
					REV. A	