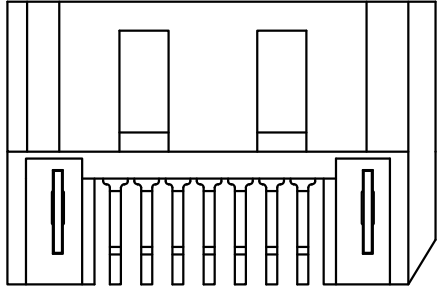
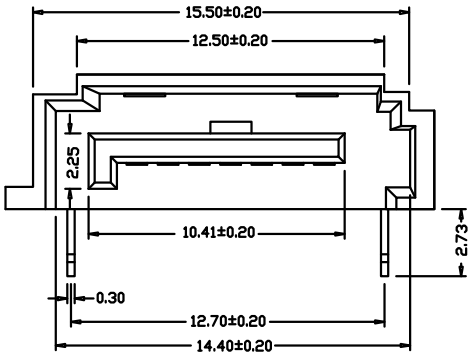
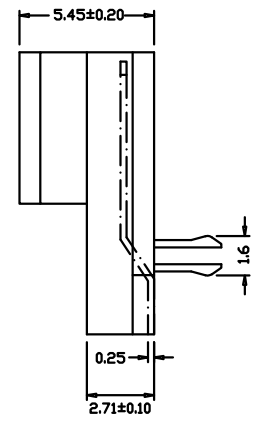
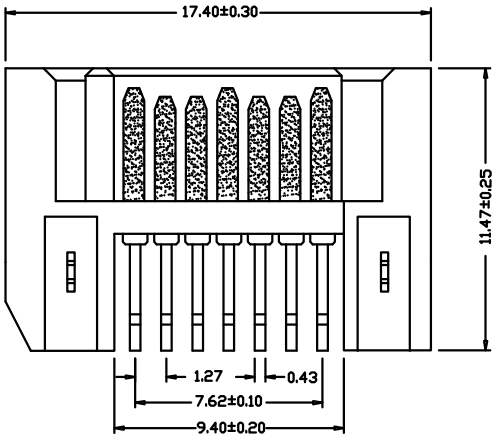


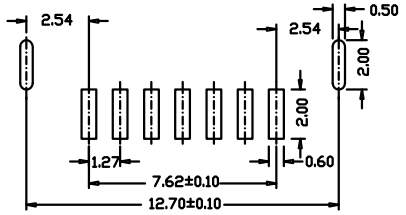
REV.	ECN.NO.	APPD.
A	/	/



- NOTE:
- MATERIAL:
HOUSING: LCP WITH 30% GF, UL 94V-0, BLACK COLOR.
CONTACTS: PHOSPHOR BRONZE.
BOARDLOCKS: BRASS.
 - FINISH:
CONTACTS: GOLD FLASH PLATED ON CONTACT AREA, [100μ"] MIN..
BRIGHT-TIN ON SOLDER TAIL, WITH ENTIRE CONTACT UNDERPLATED [50μ"] MIN.. NICKEL.
BOARDLOCKS: [100μ"] MIN. BRIGHT-TIN OVER[50μ"] MIN. NICKEL ON ENTIRE BOARDLOCK.
 - PART NUMBER DESCRIPTION :



ST12-0241-G618
 G:半金G/FU"
 1:黑色
 6:LCP



P.C.B Layout

TOLERANCE UNLESS OTHERWISE SPECIFIED		深圳市华联威电子科技有限公司 HUA LIAN WEI TECHNOLOGY ELECTRONICS CO;LTD.					
.XXX ±0.10	.XX ±0.20	.X ±3'					
.X ±0.30	.XX ±2'						
APPROVED		PART NAME:	SATA 卧式 公座 全塑				
CHECKED		PART No:	ST12-0241-G618	C			
DRAWN	chenyiting	PROJECTION:	UNIT:	SCALE	SHEET	REV.	
DATE	2023. 06. 27		mm	1:1	10F1	A	