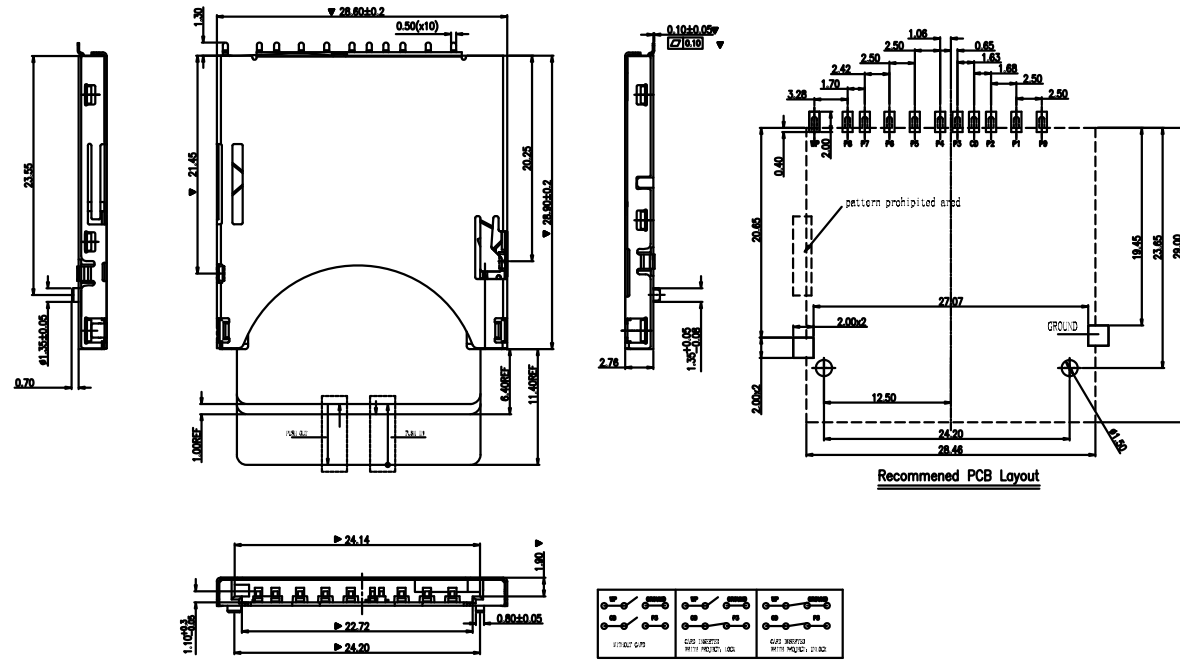


REV.	ECN.NO.	APPD.
A	/	/



***Electrical Characteristics:**
 Contact Current Rating:0.5 Amperes.
 Dielectric Withstanding Voltage:AC500V r.m.s.
 Insulation Resistance:1000 MΩ Minimum.
 Contact Resistance:100 mΩ Maximum.

***Environmental:**
 Operating Temperature:-25°C~+90°C.

***Environmental:**
 Mating Cycles:5000~10,000 Insertions.

***Mechanical Characteristics:**
 Card Push Insertion/Out Force:1.4kgf. MAX
 Contact Separation Force:0.20kgf Minimum.

***Material:**
 Insulator:HI-Temp Plastic UL 94V-0 Rated.
 Contact:Copper Alloy(t=0.15mm).
 Shell:Stainless Steel(t=0.20mm).
 Spring:SWP.

SD5211-070-G6R
 G. 半金G/Fu” ——— 6. LCP黑色

Pin#	Name	Type	Description
P1	CD/DAT3	I/O/PP	Card Detect/ Data Line[Bit3]
P2	CMD	PP	Command/Response
P3	Vss1	S	Supply voltage ground
P4	VDD	S	Supply voltage
P5	CLK	I	Clock
P6	Vss2	S	Supply voltage ground
P7	DAT0	I/O/PP	Data Line [Bit 0]
P8	DAT1	I/O/PP	Data Line [Bit 1]
P9	DAT2	I/O/PP	Data Line [Bit 2]

TOLERANCE UNLESS OTHERWISE SPECIFIED		FLW 深圳市华联威电子科技有限公司			
.XXX ±0.10 .XX ±0.20 .X ±0.30		.X* ±3* .XX* ±2*		HUA LIAN WEI TECHNOLOGY ELECTRONICS CO;LTD.	
APPROVED		PART NAME:	SDCARD 卡座-SD PUSH 2和一		
CHECKED		PART No:	SD5211-070-G6R	C	
DRAWN	chenyiting	PROJECTION:	UNIT:	SCALE	SHEET
DATE	2023.06.27		mm	1:1	10F1
					REV. A