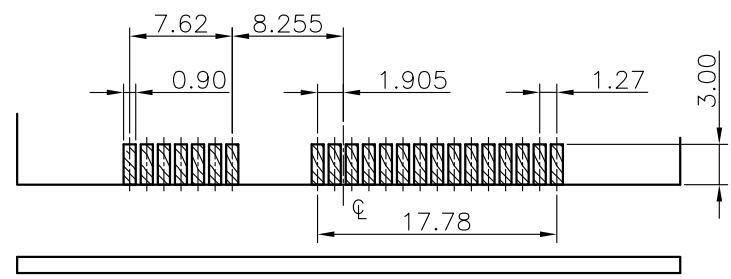
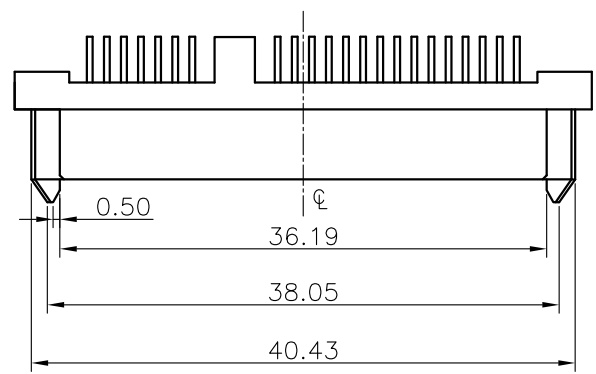


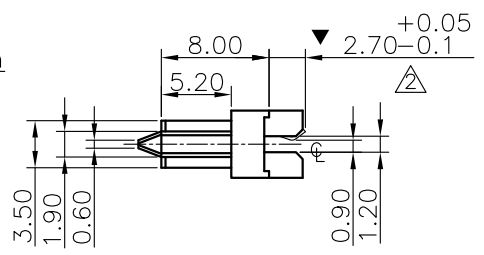
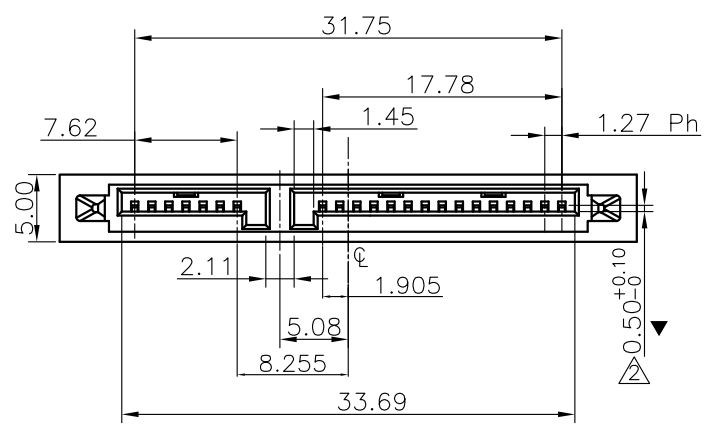
REV.	ECN.NO.	APPD.
A	/	/



RECOMMEND PCB LAYOUT (T=1.2)
PCB TOLERANCE:±0.05

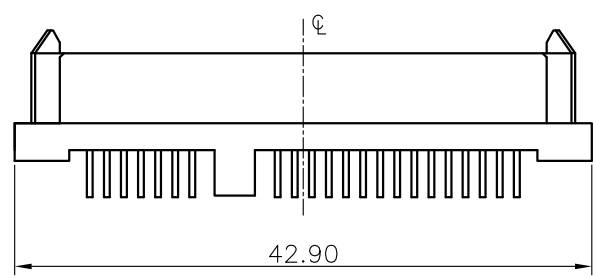
NOTE:

- MATERIAL:
HOUSING: LCP WITH 30% GF, UL 94V-0, BLACK COLOR.
CONTACTS: BRASS
- FINISH:
CONTACTS: GOLD FLASH PLATED ON CONTACT AREA, [100μ"] MIN..
BRIGHT-TIN ON SOLDER TAIL, WITH ENTIRE CONTACT UNDERPLATED [50μ"] MIN.. NICKEL.
- SPECIFICATION:
3.1 RATING:1.5A;
3.2 CONTACT RESISTANCE:≤30mΩ;
3.3 INSULATION RESISTANCE:≥1000MΩ;
3.4 WITHSTAND VOLTAGE:AC500V FOR ONE MINUTE,
CURRENT LEAKAGE:0.5MA MAX;
3.5 INSERTION AND EXTRACTION FORCE:0.4~4KGF;
3.6 LIFE TEST:500 CYCLES.
- PART NUMBER DESCRIPTION :



ST21-0540-G618

G:镀半金G/Fu" 1:黑色 6:LCP



TOLERANCE UNLESS OTHERWISE SPECIFIED		FLW 深圳市华联威电子科技有限公司			
.XXX ±0.10 .XX ±0.20 .X ±0.30		.X' ±3' .XX' ±2'		HUA LIAN WEI TECHNOLOGY ELECTRONICS CO;LTD.	
APPROVED		PART NAME:	SATA 7+15P H=8.0单边 夹板1.20mm端长2.7		
CHECKED		PART No:	ST21-0540-G618	C	
DRAWN	weihong	PROJECTION:	UNIT:	SCALE	SHEET
DATE	2021.9.23		mm	1:1	10F1
					REV. A