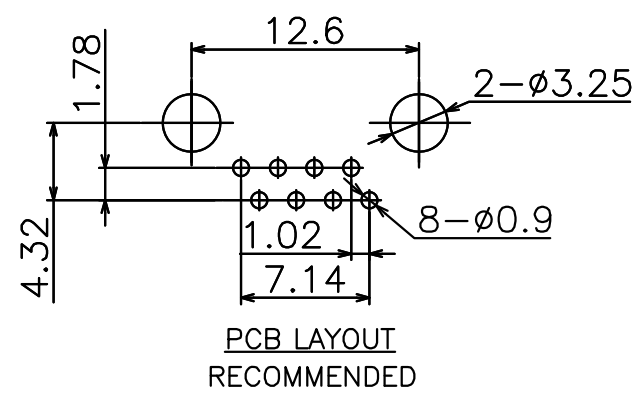
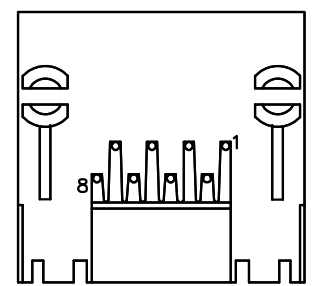
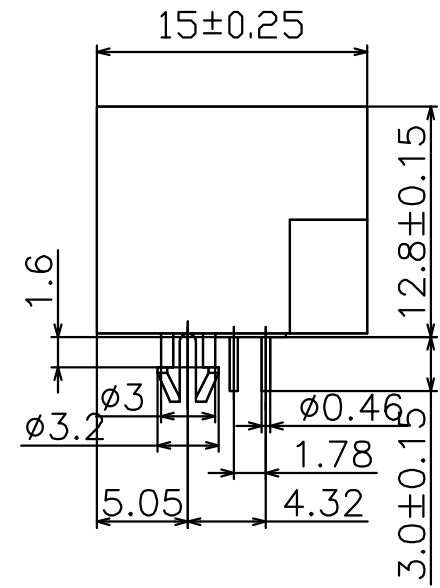
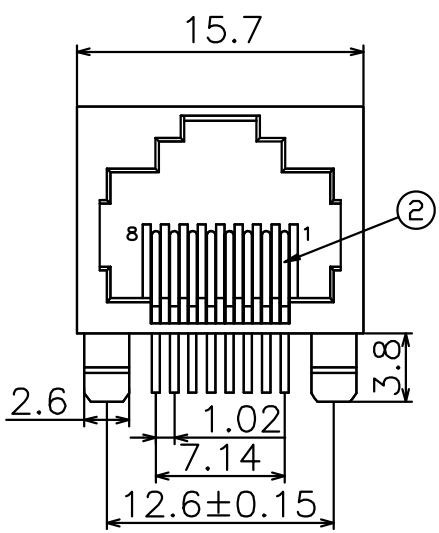


REV.	ECN.NO.	APPD.
A	/	/

NOTES:

- 1.MATERIAL:
  - 1.1 Housing:thermoplastic plastics
  - 1.2 terminals:Copper Alloy  
Gold plated in contact area:  
OR Gold Plated overall
  - 1.3 Shell:Steel&Copper Alloy  
Nickel/Tin Plated overall
- 2.ELECTRICAL CHARACTERISTICS:
  - 2.1 Rating Current :1.5 Ampere
  - 2.2 Rating Voltage :125 V Max
  - 2.3 Contact Resistance:50 Milli ohms
  - 2.4 Insulation Resistance:500 Mega ohms Min.
- 3.MECHANICAL CHARACTERISTICS:
  - 3.1 Connector Mating force: 2.27kgf MAX
  - 3.2 Durability:750Cycles.
- 4.ENVIRONMENT CHARACTERISTICS:
  - 4.1 Operating temperature:-40℃ to +85℃
  - 4.2 Storage temperature:-10℃ to +40℃



R5F0-1191F-G31018

- G:半金G/Fu"
- 1:吸塑盒
- 3:PA46
- 1:黑色

TOLERANCE UNLESS OTHERWISE SPECIFIED		<b>FLW</b> 深圳市华联威电子科技有限公司			
.XXX ±0.30	.XX ±0.20	.X ±0.10	HUA LIAN WEI TECHNOLOGY ELECTRONICS CO;LTD.		
'X' ±5°	.XX' ±2°				
APPROVED		PART NAME:	RJ45 15MM全塑无灯		
CHECKED		PART No:	R5F0-1191F-G31018	C	
DRAWN	weihong	PROJECTION:	UNIT:	SCALE:	SHEET:
DATE	2023.06.06		mm	1:1	10F1
					REV. A