

|      |         |       |
|------|---------|-------|
| REV. | ECN.NO. | APPD. |
| A    | /       | /     |

NOTES:

1.MATERIAL:

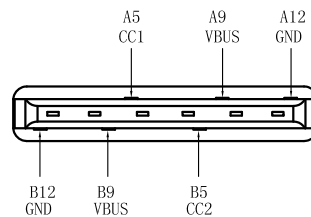
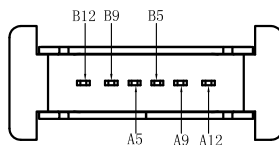
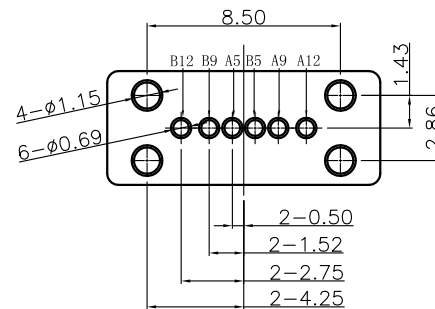
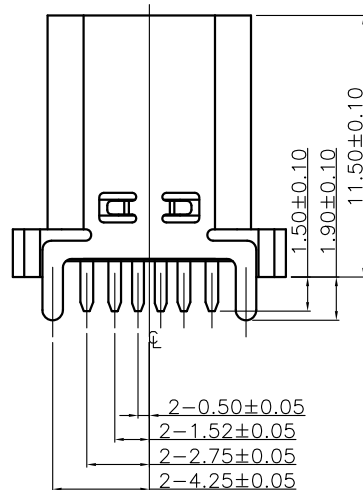
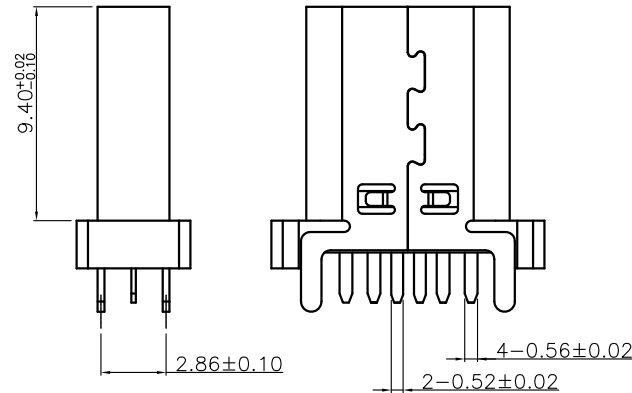
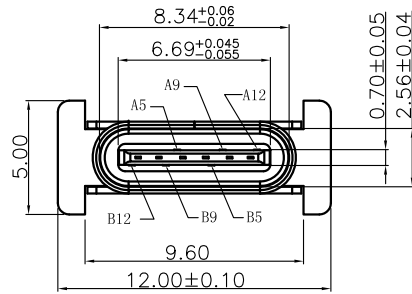
- 1.1 Housing:thermoplastic plastics
- 1.2 terminals:Copper Alloy  
Gold plated in contact area:  
Tin plated in termination  
Nickel Plated overall
- 1.3 Shell:Steel&Copper Alloy  
Nickel/Au Plated overall

2.characteristics:

- 2.1 Rating Voltage : 30V AC.
  - 2.2 Rating Current:  
5A for Vbus PIN;1.25A for Vconn PIN
  - 2.3 Contact Resistance:40 mΩ MAX.
  - 2.4 Insulation Resistance:100 MΩ MIN.
  - 2.5 Withstanding Voltage:AC 100V
  - 2.6 Mating force: 5~20N MAX
  - 2.7 Extraction force:8~20N Min
  - 2.8 Life test:10000Cycles MIN.
  - 2.9 Temperature Range: -30℃~+80℃.
- The product must be compliance ROHS

U573-761B-G61018

- B:不锈钢镀镍
- G:半金G/Fu
- 6:LCP
- 1:吸塑盒
- 1:黑色



|                                      |            |  |                      |       |       |      |
|--------------------------------------|------------|--|----------------------|-------|-------|------|
| TOLERANCE UNLESS OTHERWISE SPECIFIED |            | FLW 深圳市华联威电子科技有限公司                           |                      |       |       |      |
| .XXX ±0.10                           |            | HUA LIAN WEI TECHNOLOGY ELECTRONICS CO.;LTD. |                      |       |       |      |
| .XX ±0.20                            |            | .X ±3  |                      |       |       |      |
| .X ±0.30                             |            | .XX ±2                                       |                      |       |       |      |
| APPROVED                             |            | PART NAME:                                   | TYPE C 6PIN 高度11.5立插 |       |       |      |
| CHECKED                              |            | PART No:                                     | U573-761B-G61018     |       |       | C    |
| DRAWN                                | weihong    | PROJECTION:                                  | UNIT:                | SCALE | SHEET | REV. |
| DATE                                 | 2021.11.06 |  | mm                   | 1:1   | 10F1  | A    |