

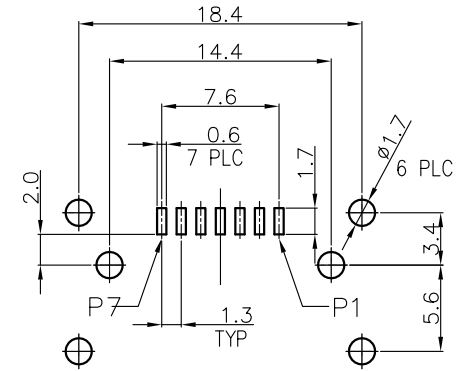
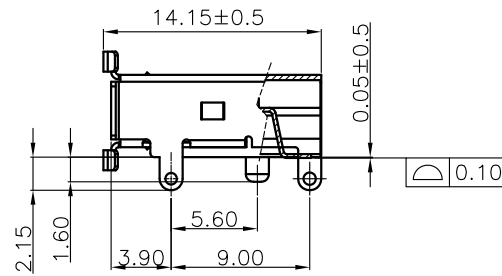
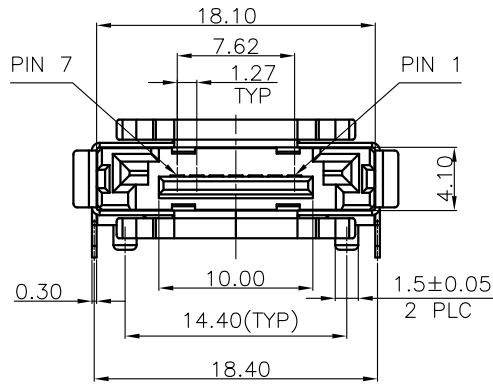
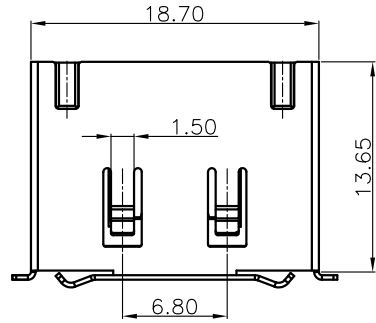
REV.	ECN.NO.	APPD.
A	/	/

NOTE:

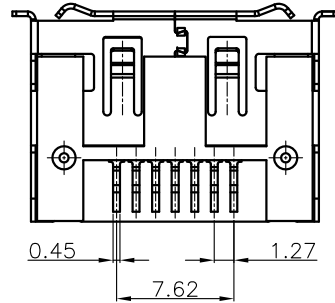
- MATERIAL:  
HOUSING: LCP WITH 30% GF, UL 94V-0, BLACK COLOR.  
CONTACTS: PHOSPHOR BRONZE.  
SHELL: BRASS.
- FINISH:  
CONTACTS: GOLD FLASH PLATED ON CONTACT AREA, [100μ"] MIN..  
BRIGHT-TIN ON SOLDER TAIL, WITH ENTIRE CONTACT UNDERPLATED [50μ"] MIN.. NICKEL.  
SHELL: [50μ"] MIN. NICKEL UNDERPLATING OVER ALL.
- PART NUMBER DESCRIPTION :

### ST22-1640-G618

G: 镀半金G/Fu"      1: 黑色  
6: LCP



TOLERANCE: ±0.05,  
RECOMMENDED PCB LAYOUT  
(TOP VIEW)



TOLERANCE UNLESS OTHERWISE SPECIFIED		深圳市华联威电子科技有限公司 HUA LIAN WEI TECHNOLOGY ELECTRONICS CO.;LTD.			
.XXX ±0.10	.XX ±0.20	.X ±3'			
.X ±0.30	.XX ±2'				
APPROVED		PART NAME:	SATA-E 7PIN MALE正向90度SMT TYPE带弹片		
CHECKED		PART No:	ST22-1640-G618	C	
DRAWN	weihong	PROJECTION:	UNIT:	SCALE	SHEET
DATE	2021.9.23		mm	1:1	10F1
					REV. A