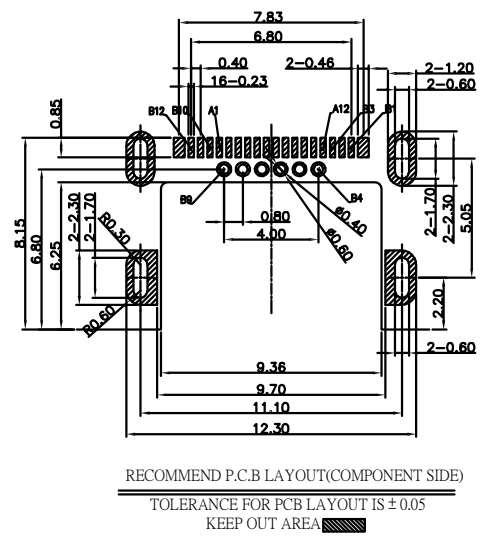
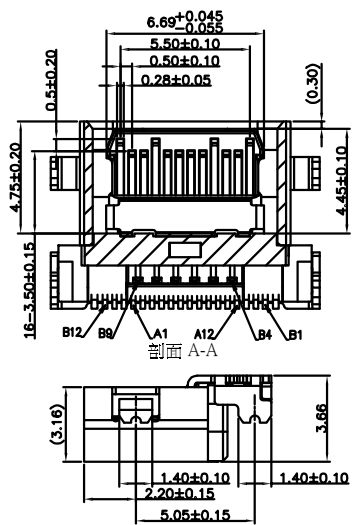
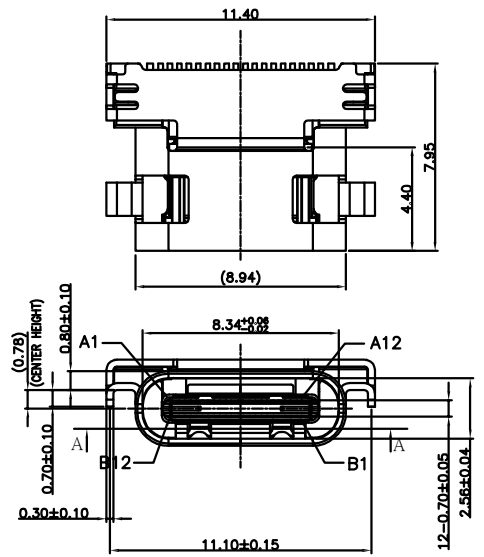
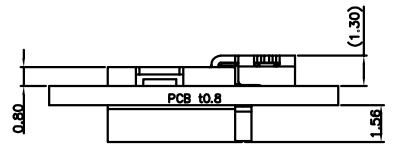
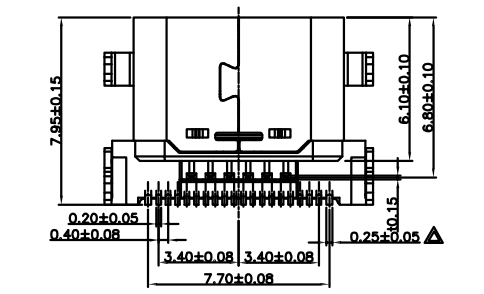


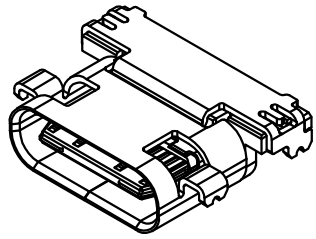
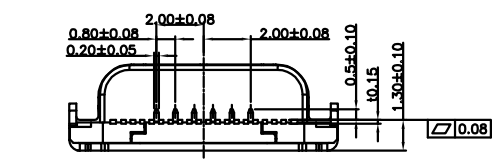
REV.	ECN.NO.	APPD.
A	/	/



RECOMMEND P.C.B LAYOUT (COMPONENT SIDE)
TOLERANCE FOR PCB LAYOUT IS ± 0.05
KEEP OUT AREA



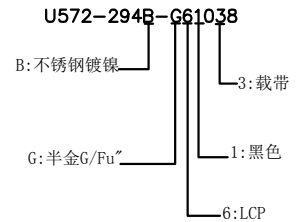
MOUNTING CONDITION (REF.)



USB TYPE-C FULL-FEATURED RECTANGULAR INTERFACE PIN ASSIGNMENT

Pin No.	Signal Name	Description	Pin No.	Signal Name	Description
11	D00	Ground return	12	D00	Ground return
12	D12a	Negative half of USB SuperSpeed TX differential pair	13	D12a	Positive half of USB SuperSpeed TX differential pair
13	D12b	Positive half of USB SuperSpeed TX differential pair	14	D12b	Negative half of USB SuperSpeed TX differential pair
15	VBUS	Bus Power	16	VBUS	Bus Power
17	D01	Configuration Channel	18	D01	Disabled Pin (DPI)
19	D02	Positive half of USB 2.0 differential pair (Data0)	20	D02	Negative half of USB 2.0 differential pair (Data0)
21	D03	Negative half of USB 2.0 differential pair (Data1)	22	D03	Positive half of USB 2.0 differential pair (Data1)
23	D04	Positive half of USB 2.0 differential pair (Data2)	24	D04	Negative half of USB 2.0 differential pair (Data2)
25	D05	Negative half of USB 2.0 differential pair (Data3)	26	D05	Positive half of USB 2.0 differential pair (Data3)
27	D06	Disabled Pin (DPI)	28	D06	Configuration Channel
29	VBUS	Bus Power	30	VBUS	Bus Power
31	D07a	Negative half of USB SuperSpeed TX differential pair	32	D07a	Positive half of USB SuperSpeed TX differential pair
33	D07b	Positive half of USB SuperSpeed TX differential pair	34	D07b	Negative half of USB SuperSpeed TX differential pair
35	D08a	Negative half of USB SuperSpeed TX differential pair	36	D08a	Positive half of USB SuperSpeed TX differential pair
37	D08b	Positive half of USB SuperSpeed TX differential pair	38	D08b	Negative half of USB SuperSpeed TX differential pair
39	D09	Ground return	40	D09	Ground return

- NOTES:
- MATERIAL:
 - Housing: thermoplastic plastics
 - terminals: Copper Alloy
Gold plated in contact area:
Tin plated in termination
Nickel Plated overall
 - Shell: Steel & Copper Alloy
Nickel/Au Plated overall
 - characteristics:
 - Rating Voltage : 30V AC.
 - Rating Current:
 - 5A for Vbus PIN; 1.25A for Vconn PIN
 - Contact Resistance: 40 mΩ MAX.
 - Insulation Resistance: 100 MΩ MIN.
 - Withstanding Voltage: AC 100V
 - Mating force: 5~20N MAX
 - Extraction force: 8~20N Min
 - Life test: 10000 Cycles MIN.
 - Temperature Range: -30℃~+80℃.
- The product must be compliant with ROHS



TOLERANCE UNLESS OTHERWISE SPECIFIED		FLW 深圳市华联威电子科技有限公司				
.XXX ±0.10 .XX ±0.20 .X ±0.30		HUA LIAN WEI TECHNOLOGY ELECTRONICS CO.,LTD.				
APPROVED		PART NAME:	TYPE C 沉板单排24PIN			
CHECKED		PART No:	U572-294B-G61038			C
DRAWN	Qinyuhua	PROJECTION:	UNIT:	SCALE	SHEET	REV.
DATE	2021.10.06		mm	1:1	10F1	A