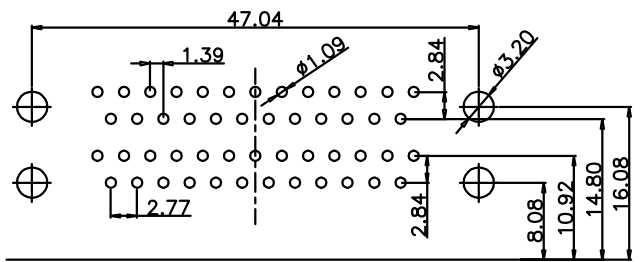
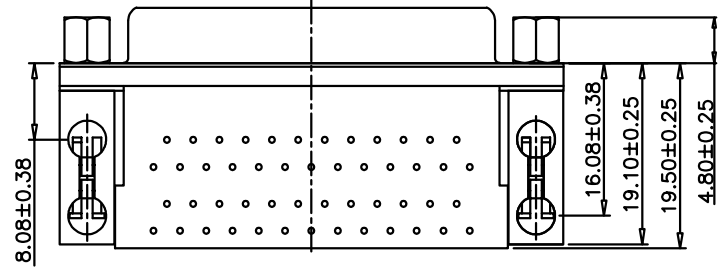
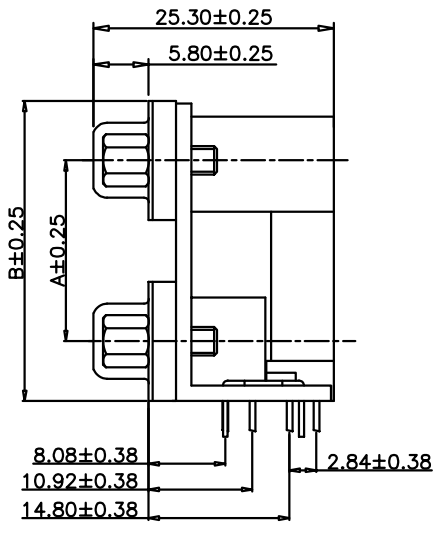
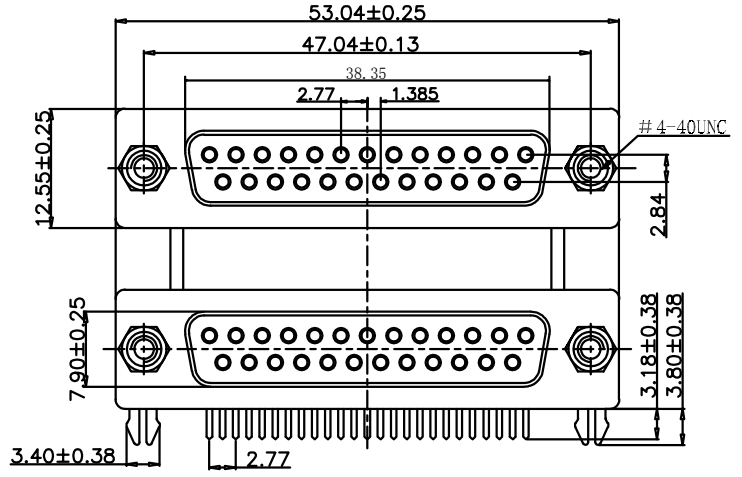


| | | |
|------|---------|-------|
| REV. | ECN.NO. | APPD. |
| A | / | / |



RECOMMENDED PCB LAYOUT THICKNESS=1.6mm
TOLERANCE:±0.05

| DIM A | DIM B |
|-------|-------|
| 15.88 | 28.43 |
| 19.05 | 31.60 |

1.SPECIFICATION

- 2.1 Current Rate: 5 Amps
- 2.2 Insulator Resistance: 1000MΩ Min.
- 2.3 Dielectric Strength: 500V AC PER MIN
- 2.4 Operation Temperature: -55°C~+105°C
- 2.5 Contact Resistance: 30mΩ Max

DS412-5210-G217

G: 半金G/Fu
1: 黑色
2: PBT

| | | | | | |
|--------------------------------------|------------|---|---------------------|-------|--------|
| TOLERANCE UNLESS OTHERWISE SPECIFIED | | HLW 深圳市华联威电子科技有限公司 | | | |
| .XXX ±0.10 | .X' ±3' | HUA LIAN WEI TECHNOLOGY ELECTRONICS CO;LTD. | | | |
| .XX ±0.20 | .XX' ±2' | | | | |
| .X ±0.30 | | | | | |
| APPROVED | | PART NAME: | D-SUB DR 25母对25叉锁双层 | | |
| CHECKED | | PART No: | DS412-5210-G217 | C | |
| DRAWN | weihong | PROJECTION: | UNIT: | SCALE | SHEET |
| DATE | 2021.11.06 | | mm | 1:1 | 10F1 |
| | | | | | REV. A |