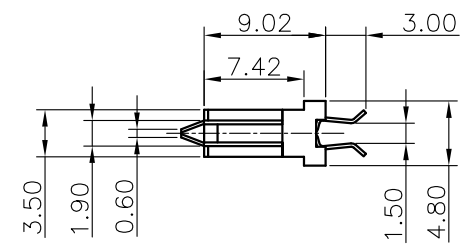
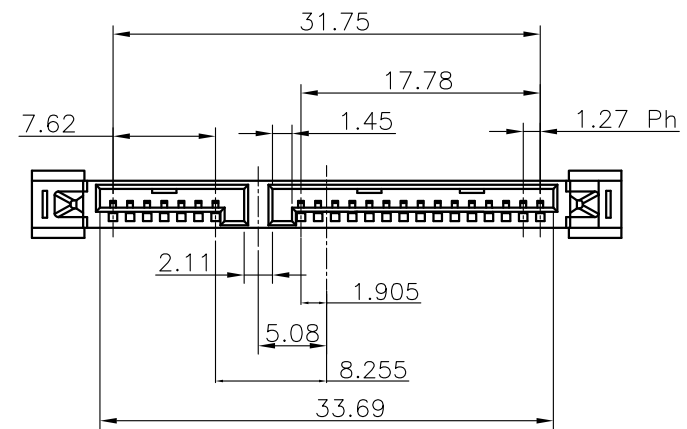
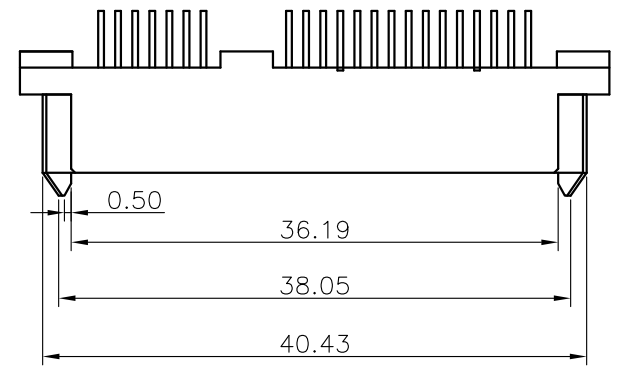


| REV. | ECN.NO. | APPD. |
|------|---------|-------|
| A | / | / |

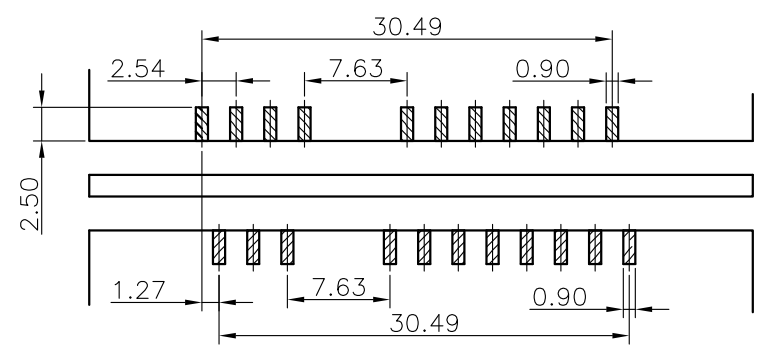


NOTE:

- MATERIAL:
HOUSING: LCP WITH 30% GF, UL 94V-0, BLACK COLOR.
CONTACTS: PHOSPHOR BRONZE.
- FINISH:
CONTACTS: GOLD FALSH PLATED ON CONTACT AREA, [100μ"] MIN..
BRIGHT-TIN ON SOLDER TAIL, WITH ENTIRE CONTACT UNDERPLATED [50μ"] MIN.. NICKEL.
- PART NUMBER DESCRIPTION :

ST21-0340-G618

G: 半金G/Fu"
1: 黑色
6: LCP



RECOMMEND PCB LAYOUT (T=1.6)
PCB TOLERANCE: ±0.05

| | | | | | | | | | | |
|--------------------------------------|-----------|---|---------|-------------|----------|----------|----------------|------------------------------|---|--|
| TOLERANCE UNLESS OTHERWISE SPECIFIED | | FLW 深圳市华联威电子科技有限公司 | | | | | | | | |
| | | HUA LIAN WEI TECHNOLOGY ELECTRONICS CO;LTD. | | | | | | | | |
| .XXX ±0.10 | .XX ±0.20 | .X ±0.30 | .X' ±3' | .XX' ±2' | APPROVED | | PART NAME: | SATA 7+15P 夹板1.6 PC=3.0无凸鱼叉脚 | | |
| CHECKED | | DRAWN | | DATE | | PART No: | ST21-0340-G618 | | C | |
| weihong | | 2021.9.23 | | PROJECTION: | UNIT: | SCALE | SHEET | REV. | | |
| | | | | | mm | 1:1 | 10F1 | A | | |